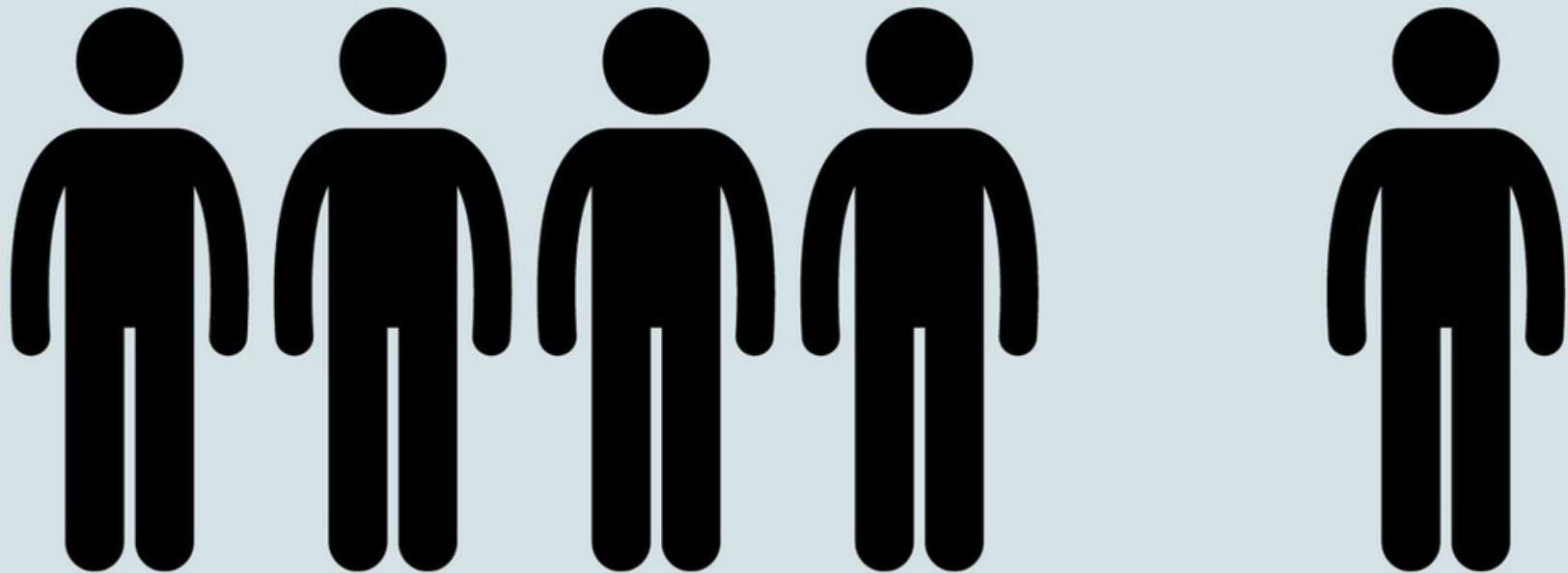
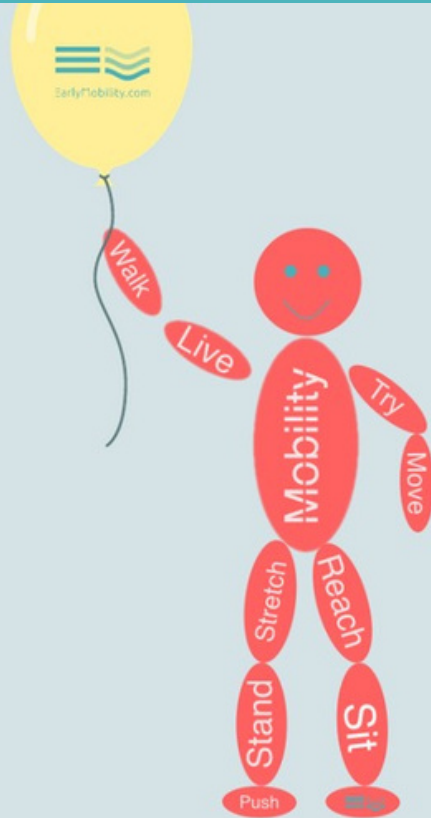


2024 EARLYMOBILITY.COM CONFERENCE VENDOR PROSPECTUS



Think Differently

Join us at EarlyMobility.com's 3rd Annual Convention and Exhibition in Orlando Florida.

April 14th-16th 2024



Orlando Florida
Marriott World Center
8701 World Center Drive
Orlando Florida, 32821



Conference Hotel Registration

Audience

We anticipate **300** attendees this year and the speakers are the Key Opinion Leaders in not just US, but from Wales, Saudi Arabia and UK. We are finalizing agenda and there will be over 9 hours of exhibitor time including breakfasts, lunches, social networking, speed dating on the first opening afternoon (Sunday April 14) and dedicated time for visiting Exhibitors.

Our target audience are MD, PT, OT, RT, RN, Educators, Program Managers and Administrators looking to improve patient outcomes, reduce length of stay and falls in their facilities.

Watch last year's conference video



earlymobility.com/2024conference



Benefits of Exhibiting

- Hands-on break-out sessions will include ICU, Acute med/surg, Post-acute settings, Rehab, and homecare/community settings, featuring simulation education products in each. We will also have a station dedicated to education and another focusing on implementing your program. You will have time to interact with our Innovation Exploration area, a unique area featuring cutting edge technologies such as Virtual Reality, AI learning, Robotics and more.
- Vendors will have multiple opportunities to interact with attendees, from speed-dating where they will have an opportunity to meet with all attendees, social hours and 9 hours of vendor time including lunches and breaks. Vendors will also be invited to participate in, and join the hands-on sessions.
- For vendors, we are looking for those who are passionate about Early and Continuous Mobility Solutions. YOU are the experts in your technologies! Your title at our conferences are Technology Solutions Experts (TSEs). We truly value the partnership between TSEs and the clinicians, and strongly encourage maximum interaction throughout the conference.

You're an attendeee too!

Join our family!! All exhibitor registrations grant you access to a multitude of education sessions. This means in addition to exhibiting and attending the opening and closing networking events, you will be able to learn more about the latest in Early Mobility alongside our attendees. What better way to connect with prospective customers than to interact and engage with them throughout the day?

The booth price includes 2 tickets to the conference! Additional tickets can be purchased by purchasing additional booth staff tickets before you check out. Tickets give you full access to all conference sessions



Note: Exhibitors will not receive CEU credits for attending education sessions.

PRICE

After you book your rooms go to booth registration at this link <https://www.earlymobility.com/event-info/earlymobility-com-conference-2024-exhibitor> or by QR code below. At the checkout section you can choose your booth. During Checkout enter discount code "hotel" to receive your \$1000 discount.

If you choose to stay at a location other than the conference hotel, the \$1000 discount does not apply.



Conference Registration/Booth Selection

EARLY BIRD

The cost of the booth is \$4,500. If your team books rooms at the hotel, we provide a \$1000 discount from your booth.

Early bird ends on November 30, 2023, so sign up fast!

REGULAR

The cost of the booth is \$5,000. If your team books rooms at the hotel, we provide a \$1000 discount from your booth.

RENTAL OF EXHIBIT HALL

SPACE INCLUDES

- 10X10 Booth unless combined with multiple booths.
- 8 hours of exhibit hall time
- Company Listing on Earlymobility.com
- Opportunity to attend sessions
- Opportunity to attend social events for networking
- Team Badges
- Access to Great hot Meals

Team Contact Info



Margaret Arnold
CEO
margaret@earlymobility.com



Kelli Ingram
Communications Manager
kelli.ingram@earlymobility.com



Annie Wiest
Exhibitor Liason
a.wiest@kamo-ms.com



Susan Wyatt
Attendee Services
susan@earlymobility.com

About the Conference

TEAM MOBILITY 2024 conference will be an immersive mix of the latest evidence and research, interdisciplinary discussion and hands-on applied case-based learning to implement Safe Early and Continuous Mobility (SECM)

Interactive discussions between doctors, nurses, physical and occupational therapists, respiratory therapists, patients and technology solutions experts will help you build your team and understand how to engage other disciplines to promote a culture of Safe, Early and Continuous Mobility in your facility.

Hear best early and continuous mobility practices from experts around the world and will have opportunity to interact with, and discuss your challenges with leading experts in the field.

Physician panel, patient survivor panel, team building activities, hands-on clinical case-based learning and more. If you are looking for practical solutions and how to actually DO the mobility, this conference is for you!

Target audience:

Clinicians across all disciplines who are implementing safe patient handling or early mobility programs (Safe Early and Continuous Mobility) (PT, PTA, OT, COTA, MD, PA, RN, NP, LPN, RT, CNA. Administrators looking to connect with experts and solutions to reduce length of stay, falls, pressure injuries and caregiver injuries; Patient safety officers, quality professionals and Risk loss professionals looking to improve outcomes, decrease patient harm and find tangible solutions that improve patient care AND reduce cost/risk and harm.

No prior qualifications are needed. The conference is primarily introductory level information but whether you are new to Safe Early and Continuous Mobility or an expert, you will take away new ideas and strategies from this conference.

See CEU page for CEU information. Attendance and active participation for the entire conference will be required and completion of an evaluation form with self-reported achievement of learning objectives to be awarded CEU.

This conference is highly interactive, and one of our ways to reach those who are not able to attend in person is through videos, pictures and conversations from the conference.

Overarching objectives for this conference.

By the end of this conference, attendees will:

1. Describe 3 reasons why Safe Early and Continuous Mobility (SECM) is needed across all care settings
2. Be able to describe what SECM means, and provide an example of mobility practices that are safe, early and continuous.
3. Be able to discuss the roles of each discipline to promote a successful integrated SECM program across care settings.
4. Discuss how technology and the technology solutions experts can transform the ability to achieve highest level of functional independence for patients, even as staffing shortages surge and threaten care provision.

Exhibit Hall Hours



Sunday April 14: Set up

7:00am

Registration Open for TSEs

10:00am

Open for Setting up Booths

3:00pm

Opening Ceremony in Auditorium

4:30pm

Opening in Exhibition Hall. Speed Dating with TSEs

6:15pm

Networking Social and Time with TSEs

7:30pm

Adjourn Day 1



Monday April 15

7:00-8:00am

Breakfast in Exhibitor Hall and time with TSEs

8:00-10:15am

Plenary Sessions in Auditorium

10:15-10:30

Break in Exhibitor Hall

10:30-12:00

Plenary Sessions in Auditorium

12:00-1:00

Lunch in Exhibition Hall and time for visiting with TSEs

1:00-2:45

Breakout Hands-on in Clinical Areas throughout the Exhibition Hall

2:50-4:00

Poster viewing in Exhibitor Hall and time to visit with TSEs

4:00-4:45

Plenary Session in Auditorium

4:45-5:30

Teamwork Games / Escape Room activities in Exhibition Hall

Tuesday April 16



7:00-8:00am

Breakfast in Exhibition Hall and time with TSEs

8:00-8:40am

Plenary Session in Auditorium

8:40-10:30

Break-out Sessions in Clinical Areas of Exhibition Hall

10:30-12:30

Break, Time with TSEs and Lunch (Served at 11:45)

12:30

Tear Down Exhibit Hall

Expo Hall Layout

Sponsorship Opportunities

Opening Reception Sponsorship

Breakfast Sponsorship

Lunch Sponsorship

Back Pack Sponsorship

WaterBottle Sponsorship

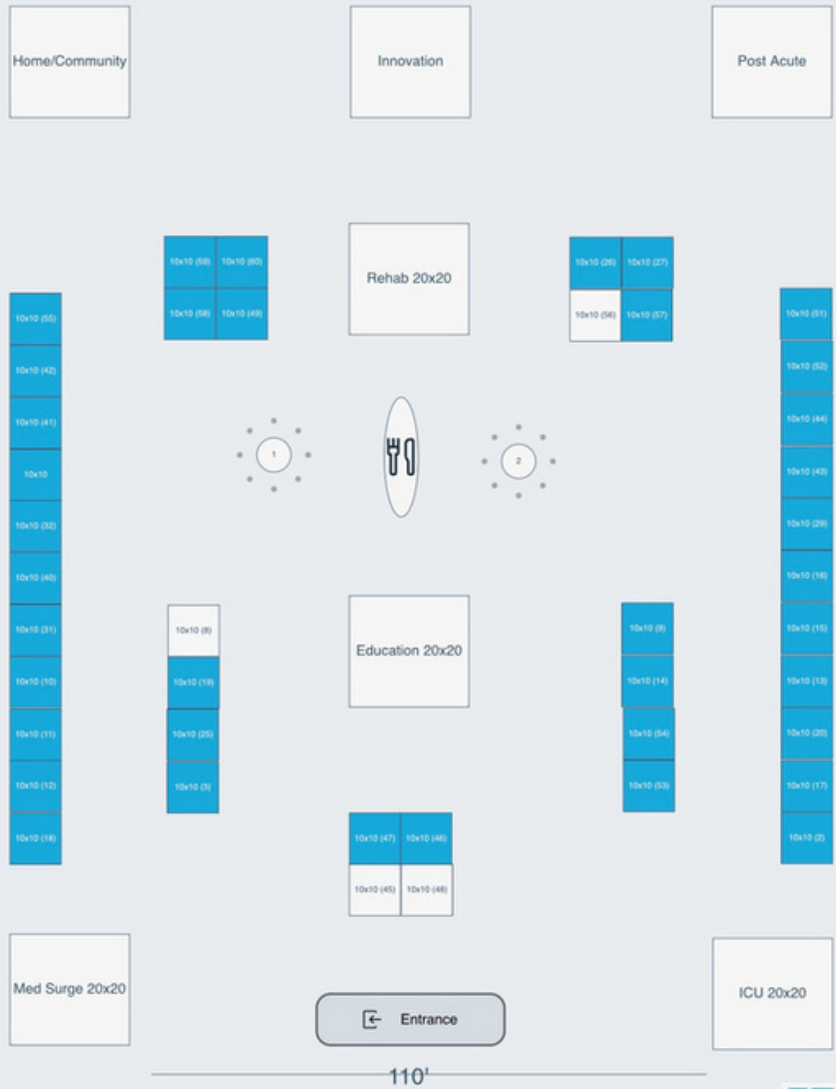
Pre/Post Show Email Blast

Pre/Post Presentation Video Loop

During Show Shout Outs

Add Ons

Additional Booth Personnel



THANK YOU

TO OUR 2023 EARLY MOBILITY

CONFERENCE VENDORS

agiliti

Alpha
Modalities

Amico

arjo
with people in mind

ECMO
Advantage

Guldmann

Healthy Design

HOVERTECH
INTERNATIONAL

Inspire
Outcomes^{INC}

KREG
THERAPEUTICS

LifeGlider

LIVENGOOD
MEDICAL

medcotech

PATTRAN
JAMAR HEALTH PRODUCTS, INC.

rifton

RF
HEALTH
CLICK HERE FOR
HEALTH

SENECA
DEVICES

TriVent
HEALTHCARE

VANCARE
we move body and mind

vidatak

INTERNATIONAL JOURNAL OF
SPHM
& FALLS MANAGEMENT

VIRTUSENSE

VitalGo
Systems Ltd.

WY'EST
MEDICAL

The Association of
Safe Patient
Handling
Professionals

VENDOR TESTIMONIALS

“

“As a clinician-inventor, I can tell you that the EarlyMobility.com conference is a great place to both introduce your solution and network with passionate end-users. My relationship with EarlyMobility.com is working!”

Marie T Pavini MD FCCM FCCP

”

“

“A connection from the Early Mobility Conference 2023 led to our biggest capital sale of the year”

Jarett Armstrong, VitalGo

”

Rules and Regulations Governing Use of Space by Exhibitors

GENERAL INFORMATION

The information contained in the 2024 Exhibitor Prospectus and Booth Selection Agreement, is Formal Notification of Assignment constitute a contract between the Earlymobility.com and the exhibitor for the right to use the space allotted. The following rules are part of the contract. Any point not specifically covered in these rules is subject to the decision of the Earlymobility.com, whose decision shall be final. In the event of fire, strikes, acts of God, or other unavoidable occurrence rendering the exhibit space unfit for use, provisions will be made for the exhibit to be held elsewhere at the discretion of the Earlymobility.com, or a refund of the exhibit booth cost, less 25% for advertising and set-up expenses incurred by the Earlymobility.com, will be made to the exhibitor. In holding the Earlymobility.com Conference and Expo (hereinafter referred to as "Conference and Expo"), Earlymobility.com does not act as the agent of the exhibitor, the facility, the general show contractor, or any other party. Claims against any party other than the Earlymobility.com are to be submitted directly to the party involved. Earlymobility.com shall not in any manner or for any cause be liable or responsible to any exhibitor or any other person for any injury or damage to any person, business, or property in any way related to or arising in connection with Exhibitors actions or omissions. Any and all claims for such injuries or damages are hereby waived and the exhibitor agrees to indemnify and hold harmless the convention facility, the general service contractor, the Earlymobility.com and their directors, officers, employees, and agents (the "Indemnified Parties") against any and all claims, liabilities, losses, and expenses, including reasonable attorney's fees imposed on, incurred by, or asserted against the Indemnified Parties caused by any act or omission of the exhibitor, its agents, or employees, or occurring within the exhibit space leased by the exhibitor or arising in connection with the activities conducted by the exhibitor, its agents, or employees in connection with the Earlymobility.com Conference and Expo except for

any act of omission of the convention facility, the general service contractor, the association and their directors, officers, employees and agents. The exhibitor acknowledges that neither NAHC, the convention facility, or the general service contractor maintains insurance covering the exhibitor's property or lost revenue, and it is the sole responsibility of the exhibitor to obtain such insurance. The exhibitor will be responsible for protecting its own property to its full value, either through purchased insurance or self-insurance. The Association will provide 24-hour security service with guards stationed at entrances and exits in the exhibit hall. At no time will an exhibitor be allowed to carry materials out of the hall without Earlymobility.com permission. Removal forms will be provided by Earlymobility.com. No storage of exhibit materials will be permitted between or behind booth draping. All personnel staffing exhibit space must register as exhibitors. Exhibitor badges will be allocated and are required for admittance to the exhibit hall and all Annual Meeting sessions. Earlymobility.com Board of Directors has approved a no-smoking policy for all meetings and educational programs held in conjunction with the Meeting. As such, smoking is not allowed in the exhibit hall at any time during Meeting hours or booth installation and dismantling.

ELIGIBILITY & EXHIBIT HALL CONDUCT

In accordance with the educational purpose of Earlymobility.com Annual Conference and in accordance with the Earlymobility.com Mission Statement, any exhibitor whose proposed exhibit enhances the educational emphasis is eligible to apply for space. The Association reserves the right to reject any application that it judges does not meet these criteria. Distribution of product/service literature may be made only within the booth space assigned to the exhibitor. Only firms assigned space in the exhibit hall will be allowed to solicit business in the hall. Only customary/ descriptive product literature and samples may be distributed to meeting registrants. All promotional items require written approval by Earlymobility.com prior to distribution. In the assigned booth

space, orders may be taken; cash, credit card, and check/money order sales must be approved by Earlymobility.com. Exhibitors desiring to hold drawings for trips, merchandise, etc., must advise Earlymobility.com in writing at least 30 days prior to the exhibition. Compliance with all local, state, and federal laws must be indicated. A list of winners must be submitted to Earlymobility.com within 30 days of the Earlymobility.com Expo. Subletting or sharing of exhibit space is not permitted unless it is between divisions of the same company or given permission by Earlymobility.com. No exhibitor is permitted to promote products, equipment, or services other than its own. If an article of a non-exhibiting firm or business is required for the operation or display of an exhibitor's wares, identification of such article shall be limited to the usual and regular nameplates, imprinting, or trademarks under which the article is sold in the regular course of business. All promotional activities must be confined to the limits of rented space and must not impede traffic or interfere with the activity of other exhibitors. Leaving the exhibit unstaffed before the official close of each day is not permitted, and violation of this policy will result in a forfeiture of any exhibitor points accrued during the Conference and Expo in which the violation occurs. Distribution of helium balloons from booths is not permitted. Exhibitors must have written permission from Earlymobility.com to use helium balloons for booth decoration. The Association may evict exhibitors who, because of noise, conduct of personnel, methods of operation or for any other reason detract from the general educational character of the Annual Conference and Expo. In this event, the Association will not issue a refund. Only those companies with contracted space in the Conference and Expo may use a suite or function space for hospitality purposes at the host Convention Center and all other officially designated Annual Conference and Expo hotels. All requests must be directed to Earlymobility.com for approval and assignment. Hospitality suites may not be open during official program hours. Exhibitors planning to use the installation and dismantling (I & D) services of any company other than the official show service contractor must notify Earlymobility.com at least 30 ent or materials may begin until that time.

Prior to the Conference and Expo and Expo and provide the service company name, address, phone number, and supervisor in attendance. Exhibitor assumes full responsibility for all acts or omissions of any I & D company providing services to exhibitor. Exhibitor will assure that such I & D companies will fully comply with all terms and conditions of the host convention center Rules and Regulations and will be financially responsible for any noncompliance by I & D companies. The exhibitor is responsible for knowledge of, and compliance with, all union requirements and fire and safety codes established by the host city and the host convention center. Booth decorations must be flame-proofed and all hangings must clear the floor. Electrical wiring must conform with all federal, state, and municipal requirements. If inspection indicates negligence in compliance with these regulations or that the exhibitor has otherwise incurred a fire hazard, Earlymobility.com reserves the right to cancel all or such part of the exhibit as may be irregular, at the exhibitor's expense. Exhibitors shall not deface any part of the exhibit facility. Damages in this regard by the exhibitor, its employees, representatives, or agents to the exhibit hall will be borne by the exhibitor. Nothing will be posted on, tacked, nailed, screwed, or otherwise attached to the columns, walls, floors, ceiling, furniture, or other property of the host convention center. Exhibitor agrees that the person signing the Booth Selection Agreement as the "Authorized Signature" represents that he or she has the authorization to bind the exhibitor's corporation or partnership to all terms and conditions set forth in the 2019 Exhibitor Prospectus and the Booth Selection Agreement.

CANCELLATION POLICY

Booth cancellation will result in credit toward your booth for the next annual conference.

BOOTH SPECIFICATIONS

All furniture and accessories, electrical requirements, booth carpeting, and booth cleaning are the responsibility of the exhibitor. Booth carpeting is required. The back wall height of standard in-line booths may not exceed eight feet, and no part of the exhibit or equipment may exceed a height of four feet in the front half of the booth. Peninsula booths are restricted to a height of 10 feet including the identification sign. Island booths are restricted to a height of 20 feet including the identification sign. No exhibit is permitted to obstruct the view of adjacent booths. Earlymobility.com reserves the right to direct revision, at the exhibitor's expense, of any exhibit that does not comply with these regulations. Refer to the "Guidelines for U.S. Healthcare Conventions" developed by the Healthcare Convention Exhibitors Association (www.hcea.org) for a detailed interpretation of any questions that may arise.

IMPORTANT DATES & TIMES*

- Exhibitors may begin installing exhibits on Friday, October 11, 2019, at 8:00 am - 5:00 pm and Saturday, October 12, 2019 from 8:00 am - 5:00 pm. Installation continues on Sunday, October 13, 2019 from 8:00 am - 3:00 pm.
- All prefabricated exhibits must be removed from their crates and labeled for removal and storage by the decorator by 12:00 noon on Wednesday, October 16, 2019.
- Noncompliance in this regard may result in additional supervision and labor charges from the decorator at the prevailing hourly rate.
- Exhibitors may continue exhibit installation until 3:00 pm on Sunday, October 13, 2019, at which time all displays must be completed. Exhibitors shall install their exhibit in such a manner as to not cause damage to any other exhibits or booths or to the building. Any such damage so caused by the exhibitor shall be paid for by the exhibitor.
- The official closing time for exhibits is 2:30 pm on Tuesday, October 15, 2019. No packing of equipment or materials may begin until that time.
- All exhibits must be removed by 10:00 pm, Wednesday, October 16, 2019.